

TRUSTED SINCE 1926
BONIDE



Rose Rx[®] 4 in 1

Ready to Use

One product, quadruple control

Protect your plants from insects
and diseases

READ ALL DIRECTIONS BEFORE USING
THIS PRODUCT. Shake Well Before Using

ACTIVE INGREDIENT:

Cold Pressed Neem Oil 1.0%

OTHER INGREDIENTS: . . . 99.0%

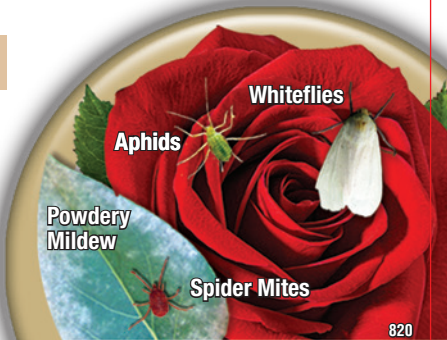
TOTAL: 100.0%

EPA Est No. 4-NY-1 EPA Reg. No. 88760-12-4

Keep Out Of Reach Of Children

(See back label for additional precautionary statements, directions
for use, storage and disposal statements)

Net Contents 32 FL. OZ. (946 ML.)



Aphids

Whiteflies

Powdery
Mildew

Spider Mites

820



**FOR ORGANIC
GARDENING**



CAPTAIN JACK'S
Rose Rx 4 *in* 1
Ready to Use

- ✓ For use on roses, flowers, ornamental plants and houseplants
- ✓ Can be used for organic gardening
- ✓ Spray right up to time of harvest
- ✓ For use in and around home and home garden
- ✓ Controls insects and their eggs
- ✓ Controls powdery mildew, botrytis, stem mildew and sour rot

EPA Reg. No. 88760-12-4 EPA Est. No. 4-NY-1

©Bonide Products, LLC All Rights Reserved.

Distributed by:

Bonide Products, LLC

6301 Sutliff Road

Oriskany, NY 13424



BN

Quart

- ✓ Use for the prevention and control of powdery mildew, botrytis, stem mildew and others as listed on label
- ✓ Can be used up to the day of harvest
- ✓ Kills eggs, larvae and adult insects
- ✓ For indoor and outdoor use
- ✓ For use on plants in hydroponic systems
- ✓ Cold pressed Neem oil is plant-based
- ✓ For greenhouses, shadehouses, interiorscapes and home garden

DIRECTIONS FOR USE

It is a violation of Federal Law to use this product in a manner inconsistent with its labeling.

READ ALL DIRECTIONS BEFORE USING THIS PRODUCT

Shake Well Before Use

GENERAL INFORMATION

This product is a ready to use spray. Shake well before using.

This product controls listed insects on contact or by ingestion. The product acts on insects by way of repellence, anti-feedant action and interference with the molting process. This product controls listed diseases by inhibiting mycelial fungal growth. The efficacy of this product is dependent on weather conditions, intensity of pest population, area of application, and physical stages of pests and crops.

CROP USES

This product may be used on bulbs, cucurbits, fruiting vegetables, leafy and brassica (cole) vegetables, legumes, root and tuber vegetables, small fruit and berries, citrus and tropical fruits, pome and stone fruits, tree nuts, herbs, and spices, grass, lawn and ornamentals.

APPLICATION AND DRENCH DIRECTIONS

Apply this product as a foliar spray or as a soil drench to control listed pests. When applied as a soil drench, avoid excessive runoff. When using as a foliar application, ensure thorough coverage of plant surfaces, but avoid pooling or runoff.

Avoid spraying under conditions of high humidity and high temperature (>90°F). To avoid potential leaf burn, apply the product in early morning or late evening. Always test the product on a small portion of plants for compatibility before treating the entire plants.

(1) To Control Insects or Mites: Apply this product at the first sight of insects/mites in a 7 - 10 day interval. For heavy insect populations, apply in a 7 day interval. This product is most effective when applied before insects or eggs are present in large numbers.

(2) To Control Diseases: This product is most effective in controlling diseases when applied as a preventative before the diseases are present. Apply the product to cover all the plant tissue in a 10-14 day interval.

(3) To Control Nematodes and for soil use: Apply to achieve a complete coverage of the soil with a 10-14 day interval.

PESTS

This product may be used to control a variety of insects and diseases listed below.

Aphids such as:

Cotton Aphid
Cowpea Aphid
Pea Aphid
Green Peach Aphid

Beetles such as:

Cucumber Beetle
Japanese Beetle
Spotted Cucumber Beetle

Borers such as:

Peachtree Borers
Peach Twig Borers

**Caterpillars/moths/
worms such as:**

Armyworms
Budworms
Cutworms
Diamondback Moth
Gypsy Moth
Leafrollers
Loopers
Naval Orange Worm

**Grasshoppers such
as:**

Carolina Grasshopper
Rice Grasshopper

**Leafhoppers such
as:**

Grape Leafhopper
Potato Leafhopper

Leafminer such as:

Citrus Leafminer
Tomato Leafminer
Vegetable Leafminer

**Maggots/Grubs such
as:**

Apple Maggots
Onion Maggots

Mealy Bugs such as:

Citrus Mealy Bug

Mites such as:
Pacific Spider Mites
Red Spider Mite
Spider Mites
Two Spotted Spider Mite

Scales such as:

California Red Scale
Coffee Green Scale
San Jose Scale
Soft Scale

Thrips such as:

Flower Thrip
Grape Thrip
Onion Thrip
Western Flower Thrip

**True Plant Bugs such
as:**

Lygus Bug
Phylloxera
Spittle Bug
Stink Bug
Tomato Stink Bug

Weevils such as:

Black Vine Weevil
Boll Weevil
Pepper Weevil

Wireworms such as:

Field/Wheat Wireworm

Flies/Gnats such as:

Fruit Fly
Fungus Gnat
Walnut Husk Fly

Psyllids such as:

Asian Citrus Psyllid
Pear Psyllid
Potato Psyllid

Whiteflies such as:

Cotton Whitefly
Silverleaf Whitefly
Greenhouse Whitefly

Foliar Fungal Diseases

Alternaria
Anthracnose
Black Spot
Blight (early, late leaf)
Botrytis

Brown rot or fruit rot
Downey Mildew
Molds
Powdery Mildew
Rust

Scab
Stem Mildew
Southern Blight
Sour Rot Grapes

Soil Fungal Diseases

Fusarium Oxysporum
Pythium
Rhizoctonia Solani

Nematodes such as:

Dagger Nematode
Lance Nematode
Lesion Nematode

Reniform Nematode
Root Knot Nematode

Soybean Cyst Nematode
Sting Nematode

STORAGE AND DISPOSAL

Store in room temperature (>72°F) where possible. Do not store this product above 104°F for extended periods of time. Avoid storing below 35°F to prevent freezing. Store out of reach of children and pets and away from direct sunlight, windows, flames and other sources of heat or ignitions. Nonrefillable container. Do not reuse or refill this container. If empty: Place in trash or offer for recycling if available. If partly filled: Call your local solid waste agency for disposal instructions. Never place unused product down any indoor or outdoor drain.

PRECAUTIONARY STATEMENTS HAZARDS TO HUMANS AND DOMESTIC ANIMALS

ENVIRONMENTAL HAZARDS

To protect the environment, do not allow pesticide to enter or run off into storm drains, drainage ditches, gutters or surface waters. Applying this product in calm weather when rain is not predicted for the next 24 hours will help to ensure that wind or rain does not blow or wash pesticide off the treatment area.

NOTICE

Bonide Products LLC warrants that this product conforms to the chemical description on the label and is reasonably fit for the purposes stated in the Directions for Use, subject to the inherent risks referred to above, when used in accordance with directions under normal use conditions. To the extent permitted by applicable law: (1) this warranty does not extend to the use of the product contrary to label instructions or under conditions not reasonably foreseeable to or beyond the control of Bonide Products LLC, and, (2) buyer and user assume the risk of any such use. TO THE EXTENT PERMITTED BY APPLICABLE LAW, BONIDE PRODUCTS, LLC MAKES NO WARRANTIES OF MERCHANTABILITY OR OF FITNESS FOR A PURPOSE NOR ANY OTHER EXPRESS OR IMPLIED WARRANTY EXCEPT AS WARRANTED BY THIS LABEL.

TRUSTED SINCE 1926

BONIDE[®]

Lift & Peel Here

KEEP OUT OF REACH OF CHILDREN

See booklet for additional precautionary statements, directions for use, storage and disposal statements.

STORAGE AND DISPOSAL

Store in room temperature (>72°F) where possible. Do not store this product above 104°F for extended periods of time. Avoid storing below 35°F to prevent freezing. Store out of reach of children and pets and away from direct sunlight, windows, flames and other sources of heat or ignitions. Nonrefillable container. Do not reuse or refill this container. If empty: Place in trash or offer for recycling if available. If partly filled: Call your local solid waste agency for disposal instructions. Never place unused product down any indoor or outdoor drain.

PRECAUTIONARY STATEMENTS HAZARDS TO HUMANS AND DOMESTIC ANIMALS

ENVIRONMENTAL HAZARDS

To protect the environment, do not allow pesticide to enter or run off into storm drains, drainage ditches, gutters or surface waters. Applying this product in calm weather when rain is not predicted for the next 24 hours will help to ensure that wind or rain does not blow or wash pesticide off the treatment area.

Bonide Products, LLC
6301 Sutliff Road Oriskany, NY 13424

©Bonide Products, LLC
All Rights Reserved